

Brunswick®

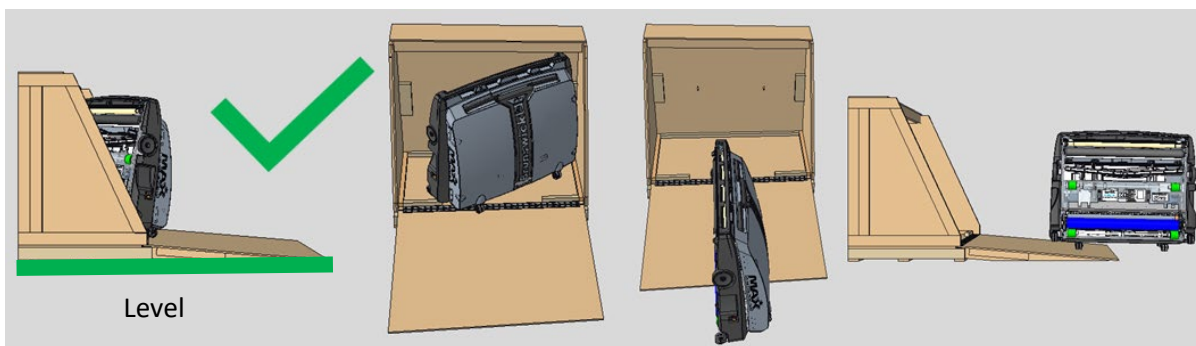
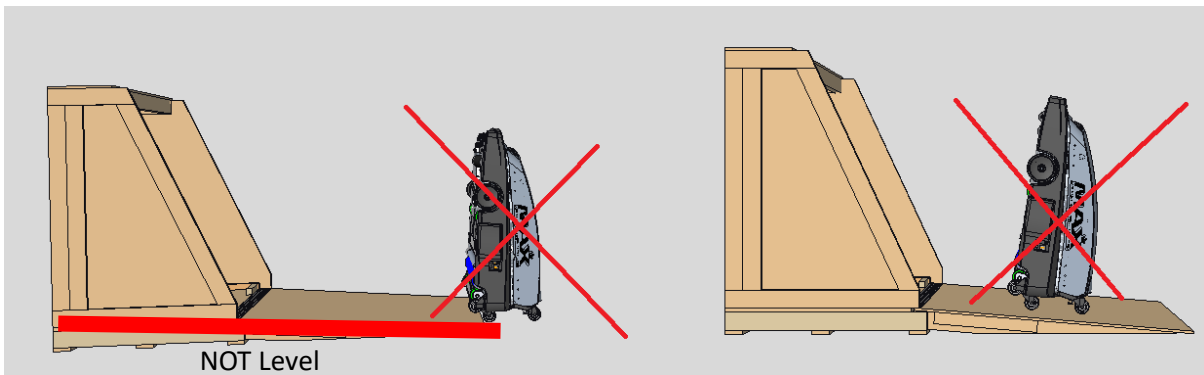
Lane Machine EZ Crate – Uncrating and Crating Instructions

Tools needed:

- Philips Screwdriver: Drill recommended.
- Clean Towel or Rag
- Zip Tie cutter (scissors or wire cutters)

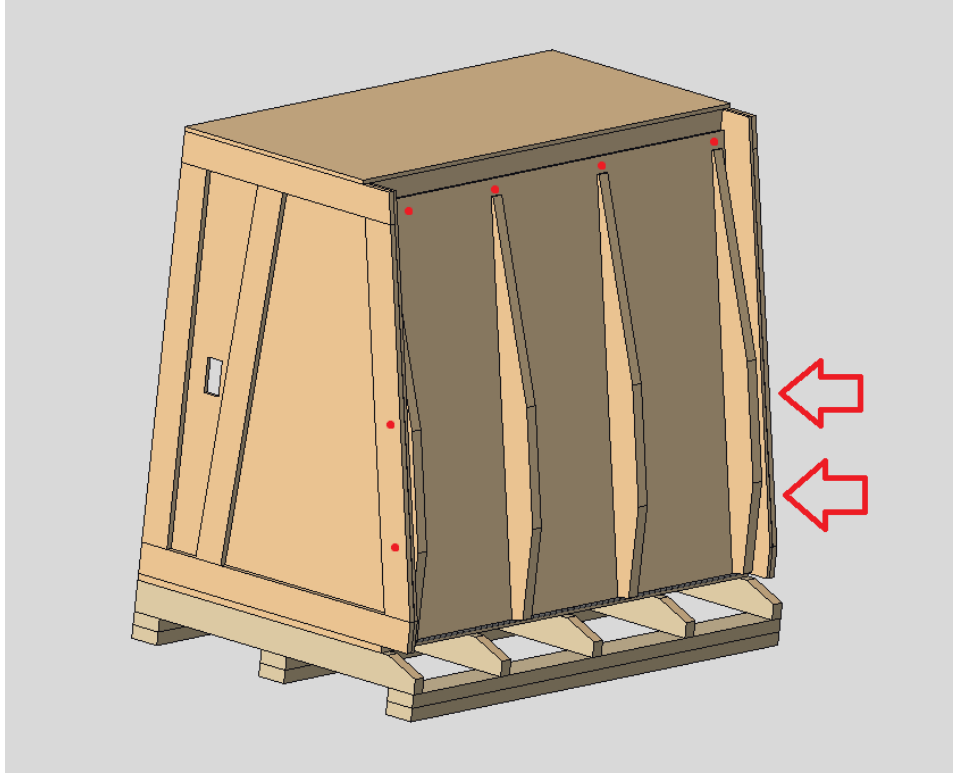
Safety

- **To prevent tip over accidents, NEVER unload or load on an uneven surface.**
- **NEVER rotate/re-position the machine while on the ramp so that the large top/bottom surfaces are facing the incline.**
- **ALWAYS turn the lane machine around floor blocks, straighten the machine, and guide it down the center of the ramp.**



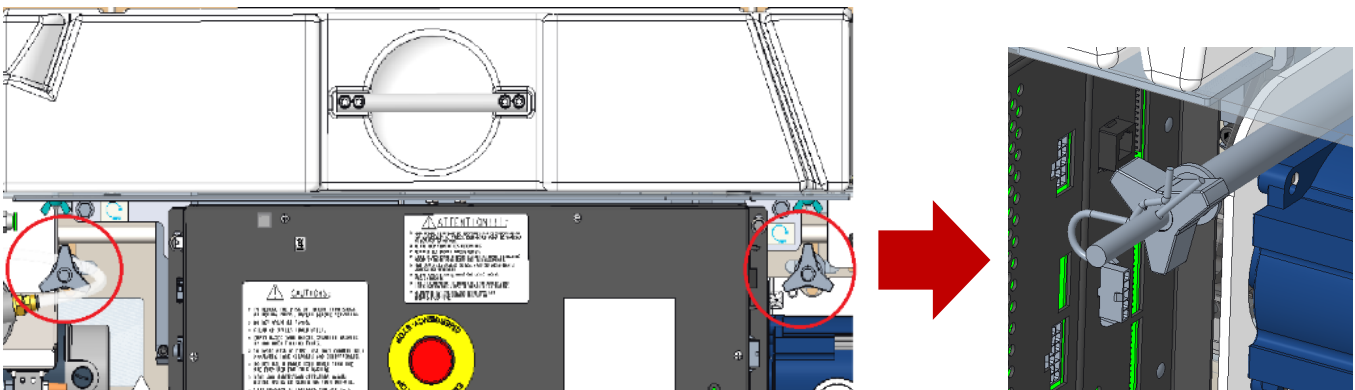
Opening & uncrating the lane machine

- 1) Remove the 8x exterior screws securing the ramp/front cover to the crate. They are marked in red. Then lower the ramp.



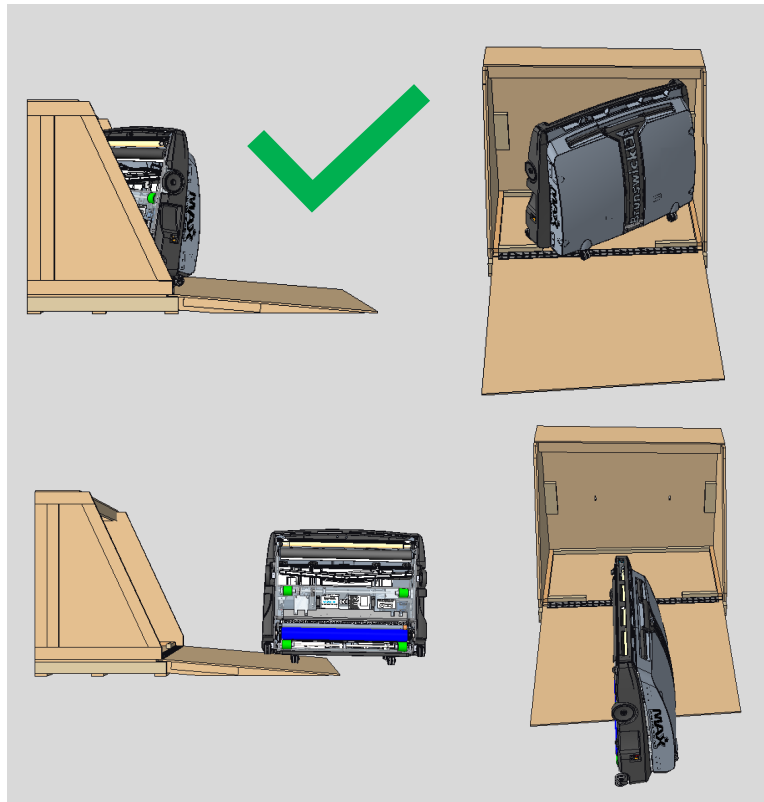
NOTE: Before lowering the handle, be sure to place a towel or other soft material over the door hinge area of the crate to prevent scratches or other damage to the handle.

- 2) Cut the zip tie on the machine handle. Rotate the T-handle to release the handle. Lower the handle. Rotate cover security knob on top left of cover. Open both of the covers.
- 3) From inside the machine, remove the security hitch pin, remove the triangular tension knob off the threaded rod, remove the flat washers, and then pull the rubber tubing sleeves off the threaded rod. Repeat for both sides, denoted below.



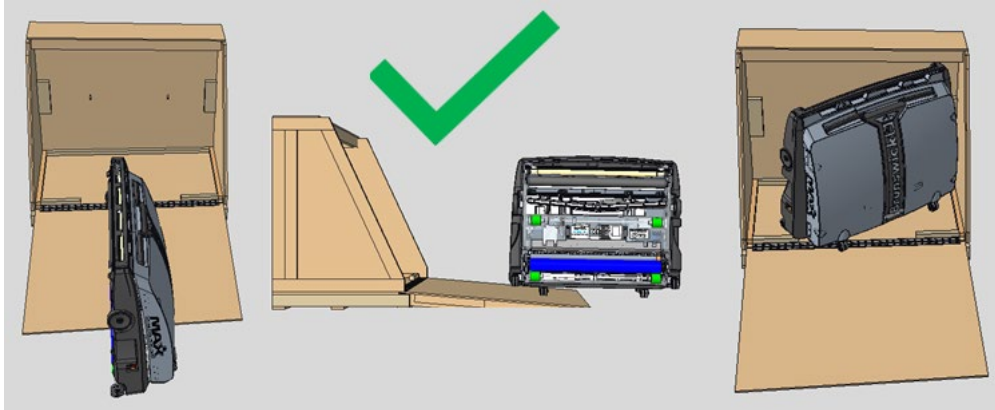
- 4) Move to the rear of the crate. Undo the Velcro retention straps from the metal strut on each side. Then SLOWLY pull the rear strut straight out from the rear of the crate.
- 5) The machine is now free within the crate. Close the covers and rotate security knob. Raise the handle, and secure by rotating T-handle.
- 6) Straighten the machine and guide it down the ramp as shown below, following all safety instructions from Page 1.
- 7) Unpack accessories from the rear shelf inside the crate. Cut additional zip ties for any additional items.

The machine is now uncrated and ready for use. We hope you enjoy your Brunswick Lane Machine!



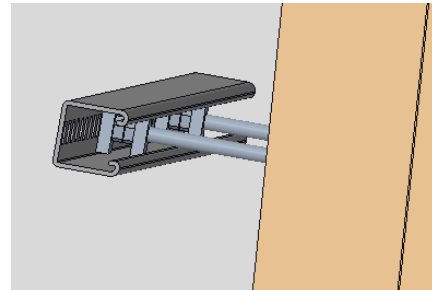
Loading Machine into Crate

- 1) Repack accessories (charger, cord, spare parts kit, spare tablet, etc.) into the rear shelf inside the crate. Secure items as necessary with zip ties to prevent movement during transit.
- 2) Align machine as shown below and push up the ramp and into the crate.



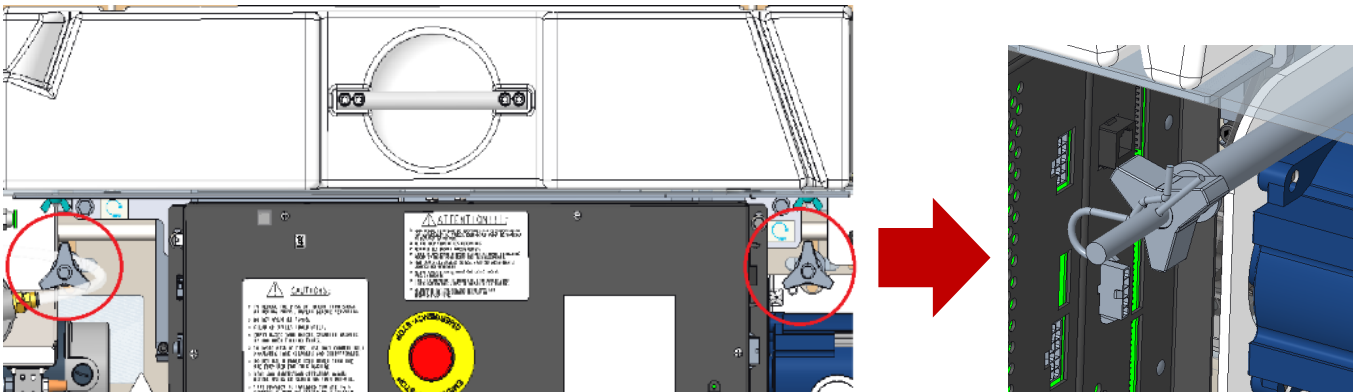
- 3) Once the machine is close to the large back wall of the crate, begin to turn the machine so that the bottom of the machine faces the back wall of the crate, and the casters track between the floor safety blocks.
- 4) Center the machine within the crate and trap the large wheels of the machine between the wood blocks on the back wall. Ensure machine is fully seated against rear wall of crate.
NOTE: Before lowering the handle, be sure to place a towel or other soft material over the hinge area of the crate to prevent scratches or other damage to the handle. Unlatch the handle and covers, lower the handle, and open the covers.
- 5) Rotate the T-handle to release the handle. Lower the handle. Rotate cover security knob on top left of cover. Open both of the covers.

- 6) Move to the rear of the crate. Prepare the metal strut assembly by sliding the two assembled threaded rods into the metal spine. Space the threaded rods within the spine at a distance that matches the rear alignment holes on the crate.



- 7) Moving the strut assembly as a complete unit, slowly insert the threaded rods through the holes in the back of the crate and through the hole in the bottom of the lane machine, **SLOWLY, ENSURING NO HOISING OR WIRING IS SNAGGED IN THE PROCESS.**
- 8) Press the spine flush with the rear wall of the crate and secure the Velcro fasteners to hold it in place.
- 9) Return to the open side of the crate. From the inside of the machine, install the following hardware on each rod (in this order):
 - a. 1 rubber tubing sleeve (push as far as possible into machine).
 - b. 1 flat washer
 - c. Triangular tension knob

- 10) Tighten the triangular knob on the threaded rod to compress the rubber sleeve until revealing the safety pin hole location on the rod. No further tightening is required. **Insert the safety hitch pin to secure the knob for transit. Repeat for second rod.**



- 11) The machine is now secured within the crate. Close the covers and rotate security knob. Raise the handle, and secure by rotating T-handle. Zip tie the handle to the machine front bumper for additional security during transit.
- 12) Close the crate ramp, and secure with 8x exterior screws securing the ramp/front cover to the crate.

The machine is now sealed in the crate and ready for transport.

